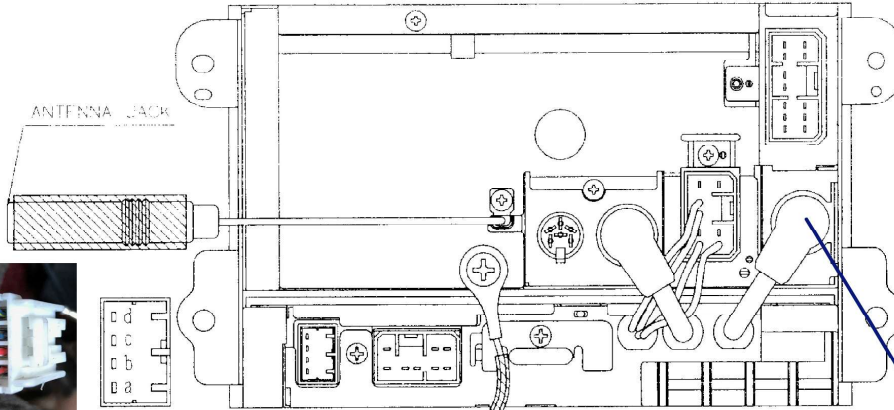
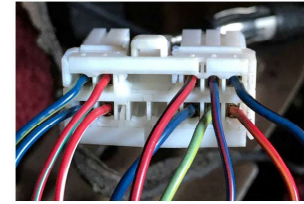
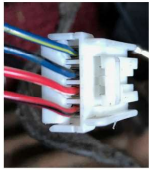


**2. CONNECTOR FUNCTION DESCRIPTION**



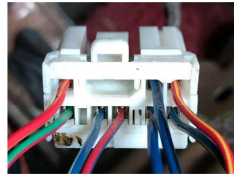
a	RADIO +ACC	Blue/Black
b	SYSTEM MUTE	Red/Yellow
c	BACK UP +B	Blue/Red
d	ANTI SW(ON EARTH)	Green/Yellow
e	TNS	Red/Black
f	ILLUMI(OUT)	Blue/Red
h	N.C.	X
i	N.C.	X
k	FR. SP. LH-	Red/Green
l	FR. SP. LH+	Red/Shite
m	FR. SP. RH+	Blue/Yellow
n	FR. SP. RH-	Solid Blue



Blue/Yellow	a	BS RH+
Blue/Black	b	BS RH-
Red/White	c	BS LH+
Red/Black	d	BS LH-



a	SPEAKER LH+ (1/2 SP)	Red/Yellow
b	SPEAKER LH- (1/2 SP)	Blue/Yellow
c	+ACC	Blue/Black
d	ILLUMI (IN)	Blue/Red
f	SPEAKER RH+ (1/2 SP)	Red/Blue
h	SPEAKER RH- (1/2 SP)	Blue/White
i	SYSTEM MUTE	Red/Yellow
j	A.L.C(METER)	Green/Red



1. Left Output
2. Left Input
3. Right Output
4. Right Input
5. Ground
6. ?
7. ACC(+12V
8. Battery(+12V
9. amp control?
10. Illumination
11. ?
12. ?
13. ?